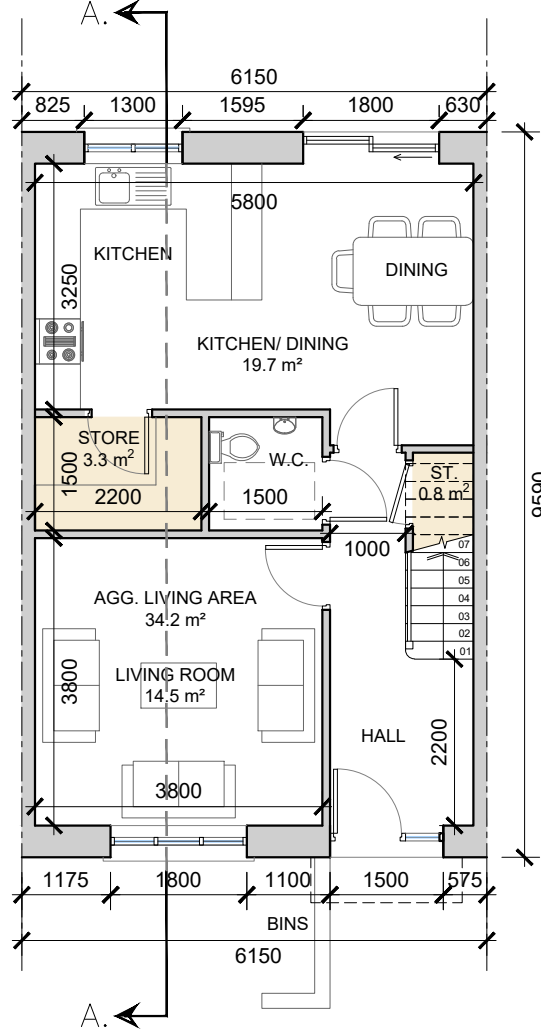


DO NOT SCALE. WORK TO FIGURED DIMENSIONS ONLY.
 ALL EXISTING DIMENSIONS TO BE CHECKED ON SITE.
 DRAWN ON AUTOCAD R2004 AT DEADY GAHAN ARCHITECTS LTD
 LAYERS ON THIS DRAWING COMPLY WITH BS 1192: PART 5

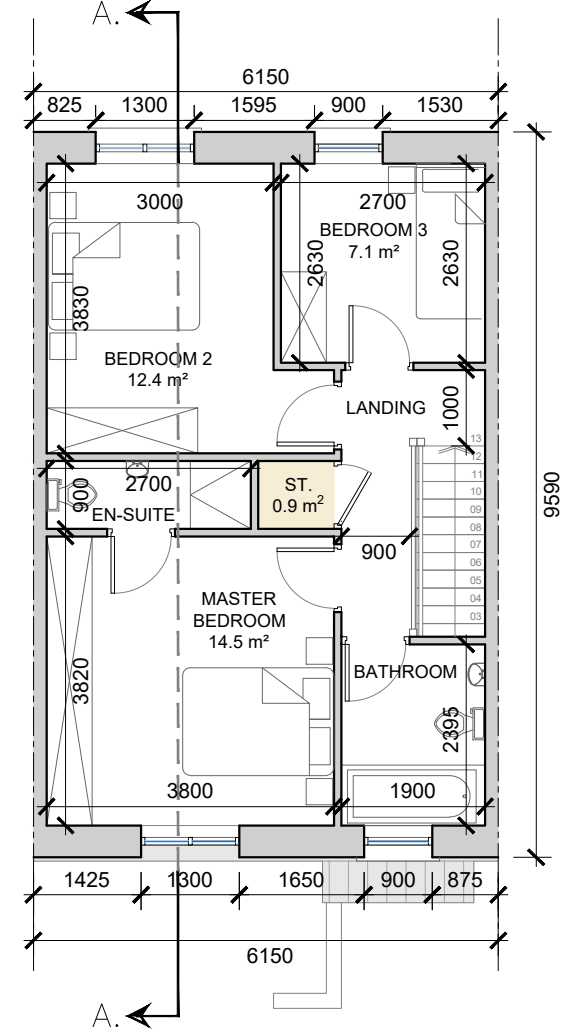
HOUSE TYPE C3
 3-bed Townhouse (5 person)

AREA: 101.6 SQ.M.
1,094 SQ.FT.

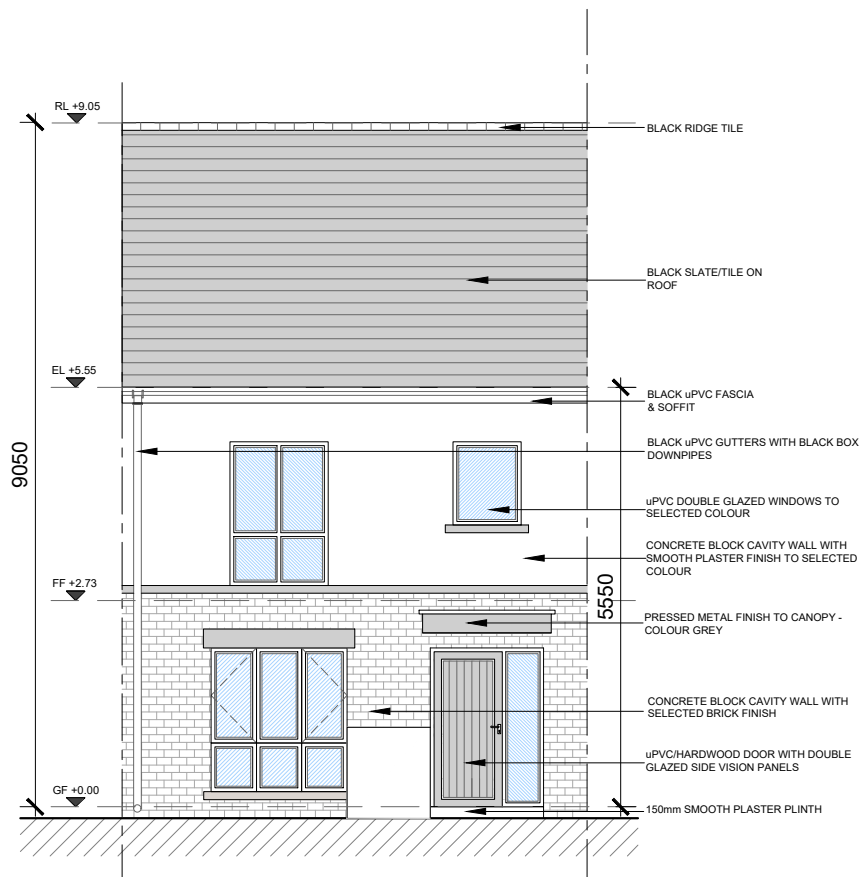
STORAGE total - 5 sq.m.



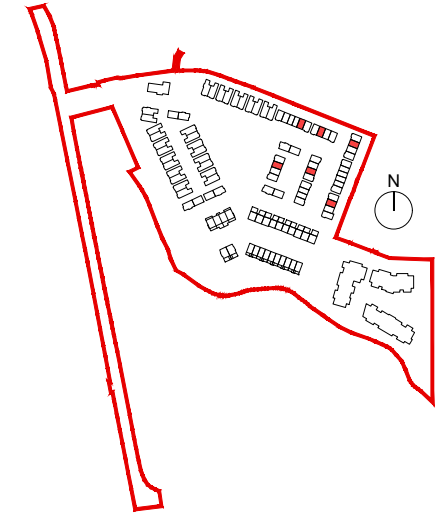
Ground Floor Townhouse
 SCALE 1:100 @ A3



First Floor Townhouse
 SCALE 1:100 @ A3

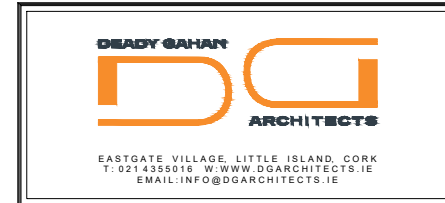


Front Elevation
 SCALE 1:100 @ A3



NOTE: POSITION OF NORTH POINT & LEVELS VARY.
 SEE SITE PLAN FOR ORIENTATION - DWG NO. 23049/P/003

date	rev	name	chk	note
07.05.24	P1	MP	EJG	ISSUE FOR PLANNING



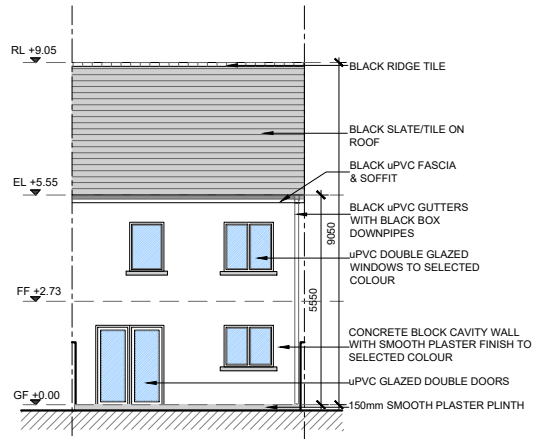
Project
 PROPOSED RESIDENTIAL DEVELOPMENT
 AT PORT ROAD, KILLARNEY, CO. KERRY

Drawing title
 HOUSE TYPE C3 - 3-BED TOWNHOUSE
 PLANS, ELEVATIONS & SECTION A-A

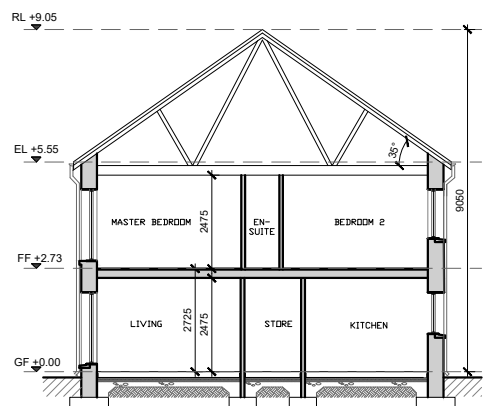
Scale	Drawn	Checked	Date
1:100/200 @ A3	MP	EJG	07.05.24

Project No.	Dwg. No.	Revision
23049	23049/P/310	P1

Information \ Comments
 Planning
 Tender
 Construction



Rear Elevation
 SCALE 1:200 @ A3



Section A-A
 SCALE 1:200 @ A3



House Type C3 - Character Area 1
 See site plan (dwg no. 23049/P/003) for material locations